



DuoCron ERP for Chemicals Manufacturing

Reliable. Scalable. Compliant. – The Advanced ERP for Smarter Chemical Manufacturing Operations!



Introduction

DuoCron ERP, built on ERPNext, is a comprehensive solution designed specifically for the chemical industry—covering everything from complex formulation management and hazardous material handling to regulatory compliance and quality control.

Chemical manufacturing operates in a highly regulated and precision-driven environment. From managing intricate formulas and handling sensitive substances to meeting strict standards like OSHA, GHS, and REACH, every process must remain controlled, safe, and efficient.

DuoCron Chemical ERP is an AI-powered, cloud-based platform built to bring complete visibility and control across operations. It streamlines workflows from formulation and batch processing to MSDS creation, lab testing, and multi-stage production. With enhanced automation and real-time insights, it enables chemical manufacturers to stay compliant, efficient, and competitive in a complex industry landscape.

What Makes DuoCron ERP Sets Apart?

- ✓ ERP is free, pay only for services.
- ✓ Fully optimized, yet easily customizable.
- ✓ Built-in Custom Industry Specific Features
- ✓ Seamlessly integrates with AI and other tools.

10+ Years of Experience

24*7 Customer Support

Worldwide Presence

We Understand Your Challenges

■ Formula and Batch Management Complexity

Handling multiple versions, concentration levels, and scale variations in formulations makes it difficult to maintain consistency across batches.

■ GHS, OSHA, and REACH Documentation

Creating and maintaining globally compliant labels, MSDS/SDS, and transport documents is time-intensive and prone to manual errors.

■ Inventory with Batch, UoM, and Expiry Management

Tracking chemicals by batch, unit of measure, expiry, and packaging type across multiple locations adds complexity to inventory control.

■ Hazardous Material Handling and Compliance

Managing hazardous substances demands strict traceability, adherence to SOPs, and detailed regulatory documentation at every stage.

■ Quality Control Across Stages

Managing raw material testing, in-process inspections, and final QA—while maintaining complete records—can slow down overall operations.

■ Production Planning and Plant Maintenance

Improper batch scheduling and unplanned equipment downtime can result in production delays, losses, and safety concerns.

We Understand Your Challenges

■ Environmental & Safety Audit Readiness

Compliance audits demand centralized, secure, and time-stamped records across all processes and plant locations.

■ Costing Inaccuracy & Margin Visibility

Inaccurate cost calculations lead to poor pricing and reduced margins. Without batch-level cost clarity, profitability decisions become difficult.



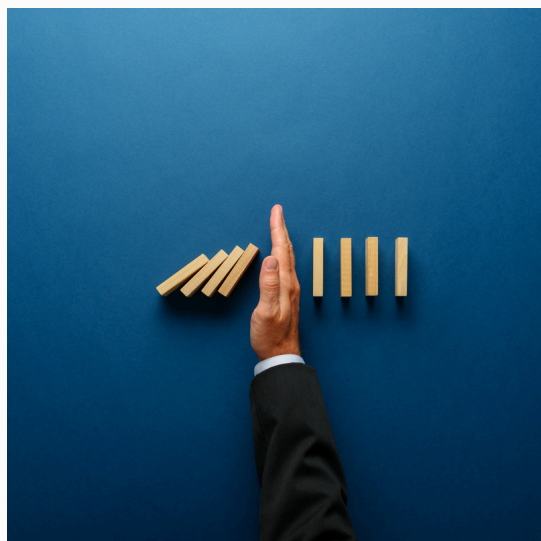
Key Features

Advanced Formula and Batch Management



Create and manage multi-level formulations with ingredient scaling, version control, by-product tracking, and solvent loss adjustments. Automate batch creation, link with QC checks, and maintain consistency across varying plant conditions.

Safety Workflows & SOP Enforcement



Implement structured safety workflows with mandatory SOP acknowledgments. Enforce safety protocols at every stage—from raw material intake to final dispatch—ensuring compliance and reducing human error.

Manage Inventory with Batch, UoM & Expiry Control



Handle chemical inventory by UoM (kg, L, drums), batch numbers, packaging types, and shelf life. Track stock across locations with bin-level visibility and enable FEFO dispatch to reduce waste and compliance risks.

Integrated Quality Control (Pre, In-process, Post)



Automate QC checkpoints for incoming materials, in-process stages, and finished batches. Record lab parameters like pH, viscosity, and composition, and restrict non-compliant batches from moving forward.

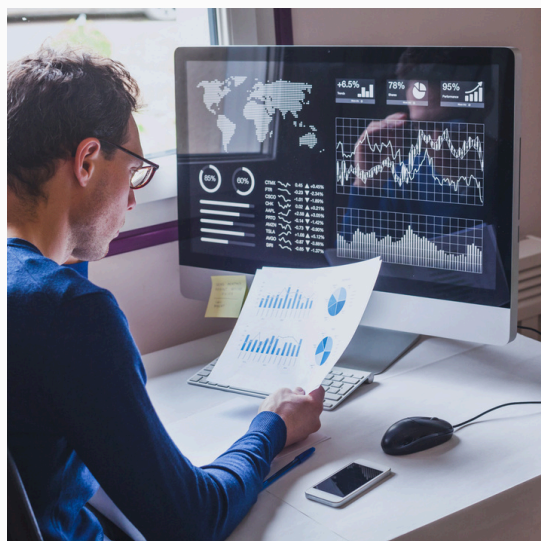
Key Features

Environmental Compliance Reporting



Track waste generation, emissions, and disposal activities. Generate reports aligned with environmental standards, GHS labeling norms, and REACH guidelines to stay audit-ready.

Regulatory Documentation Automation



Automate creation of Material Safety Data Sheets (MSDS), GHS-compliant labels, transport documentation, and batch records—ensuring seamless domestic and international compliance.

Preventive Maintenance & Equipment Management



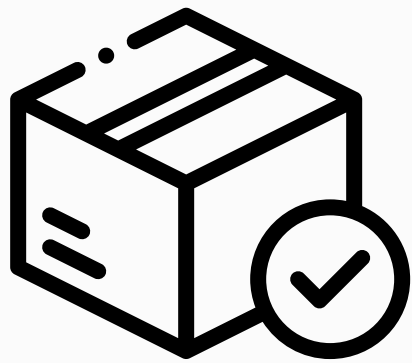
Plan maintenance for critical assets like reactors, distillation units, and scrubbers. Maintain service logs, calibration records, and breakdown history to minimize downtime and ensure safe operations.

Costing & Profitability Tracking per Batch



Analyze batch-wise production costs including raw materials, energy usage, labor, packaging, and overheads. Compare actual vs standard costs to identify leakages and improve margins.

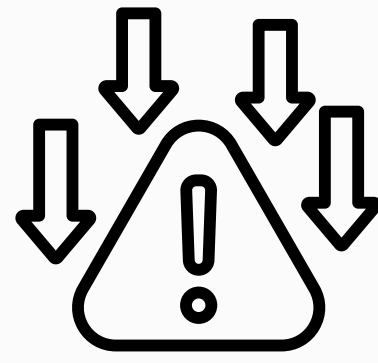
Real Benefits, Real Success



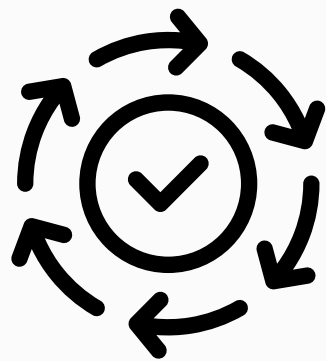
Accelerates market readiness



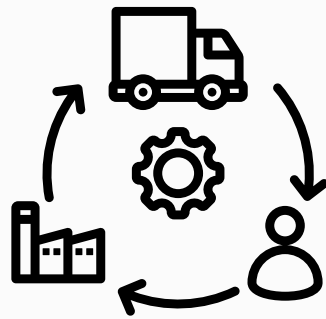
Reduces operational costs



Mitigates compliance risks



Boosts product consistency



Optimizes inventory turnover



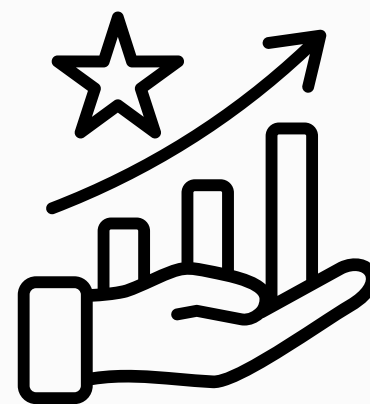
Strengthens supplier partnerships



Enhances financial transparency



Expedites sales cycles



Protects brand reputation



Contact Us for more information about DuoCron ERP for Chemicals Industry



www.DuoCron.com



sales@DuoCron.com

